



Industrial Water Systems

Products & Company Brochure

aerospace
climate control
electromechanical
filtration
fluid & gas handling
hydraulics
pneumatics
process control
sealing & shielding



ENGINEERING YOUR SUCCESS.

Parker Sea Recovery: Three Decades of Proven Performance

Since its inception more than 30 years ago, Parker Sea Recovery has evolved into the world’s leading watermaker manufacturer. Today, it is recognized globally for providing outstanding reverse-osmosis products, service and support to a broad scope of markets that includes commercial marine; offshore; oil and gas; military; and land-based organizations.

Dedicated to developing the most advanced industrial watermakers in its markets, Parker Sea Recovery engineers watermakers that are easy to use and maintain, yet are robust enough to withstand even the most challenging environmental conditions. Parker Sea Recovery systems offer advanced features including full-color touch screens, oil-free pumps, intelligent software and standard MODBUS communications that allow customers full system control and monitoring from a remote location.

Each Parker Sea Recovery system is backed by a global network of agents, distributors and service dealers, all focused on exceeding customer expectations.

Service-focused global network

Parker Sea Recovery customers are supported by a global network of factory-trained technicians that stand ready to deliver outstanding maintenance and repair, wherever and whenever a need occurs. In addition, Parker Sea Recovery distribution and service partners have experienced, helicopter-certified technicians capable of handling repair and maintenance requests, no matter the location.

Expedited worldwide delivery

Parker Sea Recovery stocks and manages an impressive inventory of replacement parts and consumables that are all tested and ready to ship as needed to any part of the world.

Whether it’s an emergency situation or a tight schedule, customers can count on Parker Sea Recovery to get the job done. With a LEAN manufacturing facility that is able to deliver on short notice, Parker Sea Recovery can provide most single systems less than a month from the date of purchase.

Intuitive technology

Nearly all Parker Sea Recovery systems are designed to be completely automated. Water production runs smoothly without the need of an operator, reducing overhead expense. Self-cleaning features and options minimize maintenance needs and prolong the life of the watermaker.



A Solid Past, An Exciting Future

A leader in reverse-osmosis technology joins a leader in innovative engineering

As part of Parker Hannifin – recognized worldwide for excellence in product engineering across a number of industries, including reverse-osmosis systems for clean-water applications – Sea Recovery brings its own legacy of reverse-osmosis engineering excellence to the Parker organization. Now known as Parker Sea Recovery, the division operates in 48 countries, providing customers with outstanding, situation-specific solutions to their unique watermaker needs.



Parker Headquarters,
Cleveland, Ohio, USA

Parker Sea Recovery products are tested & certified to comply with all pertinent environmental and global safety standards.

Parker Sea Recovery has been approved by commercial and industrial independent product safety standards including UL, IEC and CE. Parker Sea Recovery is also compliant with ISO 9001:2008 and ISO 14001:2004 standards and meets the criteria for ABS Type Approval.

Parker Sea Recovery continuously improves its products as it maintains best-in-class business practices designed to safeguard the environment, including:

- Manufacturing and distribution efforts that not only reduce pollution but also result in continuous and measurable improvements to the environment;
- Production processes that are sensitive to the individual employee, the work environment and the surroundings;
- Production facilities that comply with ISO 14001 standard, local environmental and work environment legislation.

Conformance to Global Standards and Requirements

Parker Sea Recovery products and processes adhere to global standards and requirements such as ATEX, NORSOK, IEEE and NEC.

Strict compliance with these global standards means customers can have confidence in the functionality and integrity of every Parker Sea Recovery product and service they purchase. Not only does conformance ensure that all system components meet established criteria for reliability and safety, but it also bolsters the quality and effectiveness of the overall Parker Sea Recovery system.



The Parker Sea Recovery Pledge

Valued customers

Parker Sea Recovery endeavors to delight its customers by providing products, service and support that meet or exceed each client's unique situation. By partnering with customers, Parker Sea Recovery can better discover and respond to the circumstances of each order. Ultimately, this approach means Parker Sea Recovery delivers performance-specific systems that not only address job circumstances, but also help support real and measurable productivity and profitability.

Code of conduct and ethical business practices

Parker Sea Recovery's solid industry reputation and good name – as well as the company's history of success – rests on a foundation made strong by thousands of dedicated Parker employees. Each of these professionals takes seriously a commitment to act responsibly and with integrity throughout every aspect of their work, from design and engineering through sales and support.

Promoting a safe, productive workplace

Parker Sea Recovery is committed to providing a healthy and safe working environment for each of its employees. Further, employees are charged with following all health and safety rules that apply to their jobs, and for taking all reasonable precautions to protect themselves and co-workers from accidents, injuries or unsafe conditions. This pledge to health and safety includes

encouraging employees to report any unsafe practices or conditions so that those can be expediently remedied.

The environment

A leader in environmental stewardship, Parker Sea Recovery continually improves its product design and its manufacturing processes to benefit customers, suppliers, employees and shareholders as well as its local and global communities. Constantly striving to comply fully with all applicable environmental laws, Parker Sea Recovery is dedicated to safeguarding the environment in and around plants and properties.

Supplier pre-qualification

Parker Sea Recovery understands the vital role that suppliers play in the satisfaction of its end users. As an extension of its own operations, Parker Sea Recovery charges its suppliers to provide materials, products and services that meet or exceed the requirements of contracts, applicable specifications and quality standards. In addition, Parker Sea Recovery requires that suppliers adhere to a strident code of conduct addressing ethical, legal, environmental and social responsibilities, further bolstering customer confidence in Parker Sea Recovery products and services.



Parker Sea Recovery System Benefits

With features such as intuitive controls, versatile design, automated self-maintenance and energy efficiency, Parker Sea Recovery's watermakers can accommodate a spectrum of conditions and circumstances, making them an ideal fit for nearly any industry need.

Modern user interfaces

Parker Sea Recovery user interfaces are certified to perform under even the most demanding conditions. They offer innovative industrial PLC controls featuring integrated performance-monitoring software. These features enable real-time remote monitoring of process instrumentation and system performance, as well as remote notification of detected system errors and detailed maintenance requests. Parker Sea Recovery systems are easy to operate with one-touch automatic start up and shutdown functions.

Parker Sea Recovery's watermaker systems offer versatility in design to accommodate a range of needs. Product lines include compact configurations with a minimal footprint as well as modular configurations with design flexibility to fit virtually any type of space restriction.

Energy savings

Energy savings and self maintenance are vital features of Parker Sea Recovery's line of watermakers. Automated fresh-water flushes prolong system life and maintain performance integrity, while water-lubricated pumps require little to no maintenance, reducing repair

expense and down time. Parker Sea Recovery's largest production system, the Atlantic Sea, uses the I-Save energy recovery pump, which can curtail energy consumption by up to 49 percent. This energy savings helps reduce running costs – and the vessel's carbon footprint.

Engineered to withstand nearly any type of condition, Parker Sea Recovery's line of commercial systems are a recognized standard in the production of clean water.

Containerized solutions

Ideally suited for oil and gas production, mining, military applications and disaster relief situations as well as for a variety of land-based applications where pre-configured structures must comply with environmental and

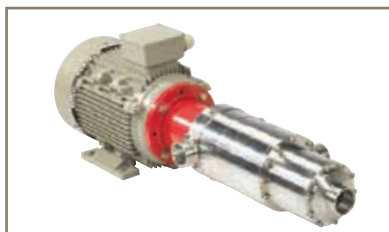
logistical conditions, Parker Sea Recovery containerized systems are pre-assembled and fully tested to ensure integrity and reliability. These turnkey products offer a plug-and-play solution for challenging circumstances.

Technical water capabilities

Parker Sea Recovery dual-pass watermakers are engineered to meet the most demanding requirements. Blending superior performance with full code compliance, Parker Sea Recovery's unique designs can provide potable and technical water from the same skid, minimizing the system footprint while improving power efficiency and lowering the total cost of ownership.

For applications where contaminants result in deposits, corrosion and carryover, Parker Sea Recovery offers reverse-osmosis systems featuring electrode-deionization mixed-bed ion exchange (MBDI) to produce the highest quality demineralized water.

Parker Sea Recovery uses standard modules that can be custom engineered to deliver optimum performance and reliability.



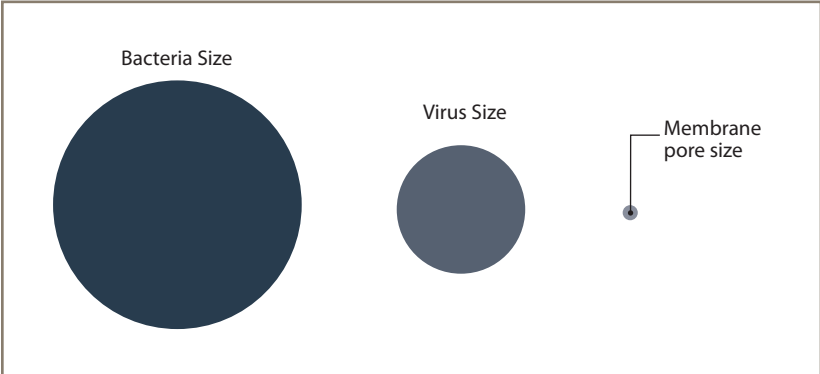
Above: System control and color touch screen. Below: I-Save Energy Recovery Pump

Reverse Osmosis Filtration: Advantages

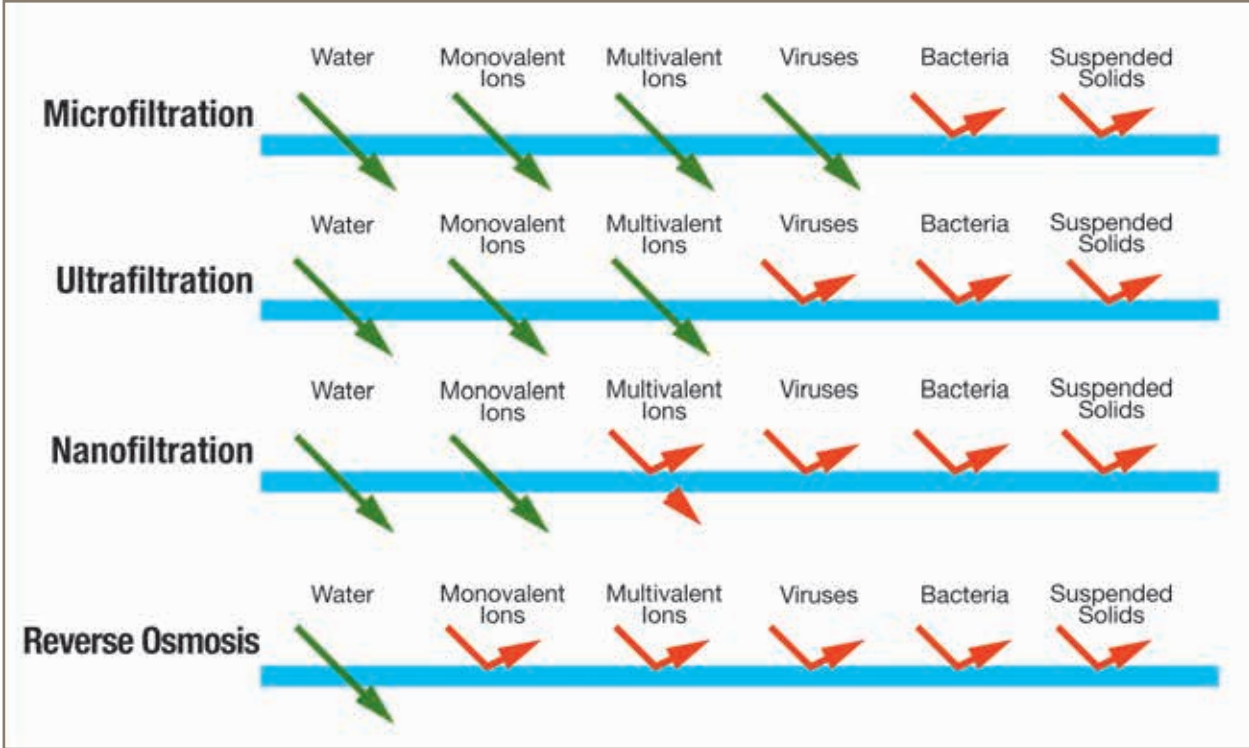
Reverse osmosis effectively removes 99.98 percent of all impurities from water, and is much safer than evaporation in eliminating contaminants. Parker Sea Recovery water purification systems feature high-yield, low-tolerance membranes with pores

that are approximately 0.0001 micron. These membranes successfully eliminate the harmful effects of lead, heavy metals, chlorine, chemical contaminants, pesticides, pathogens, bacteria, viruses and radioactive materials.

Integrated pre- and post-filtration processes, when coupled with the option to disinfect water using a UV Disinfection System, makes Parker Sea Recovery system water the safest water produced.



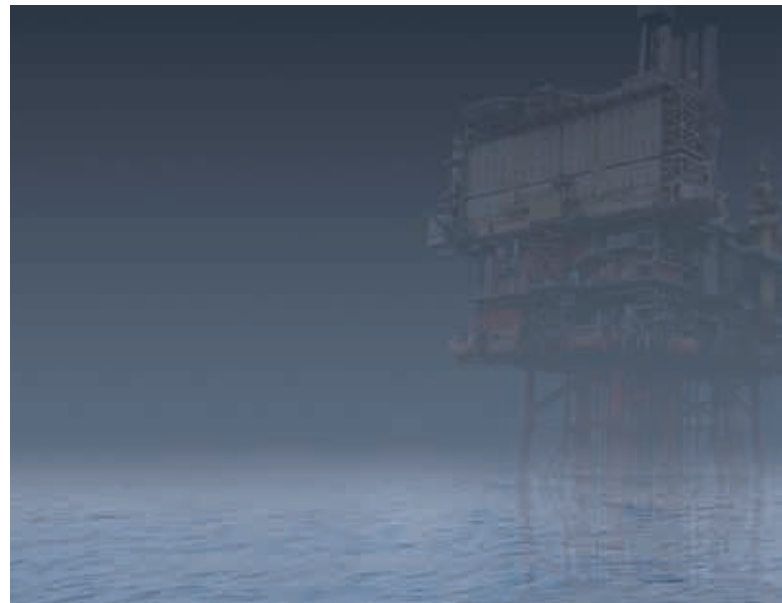
Comparison between bacteria and virus and Parker Sea Recovery's membrane pore size.



Membrane Process Characteristics

Table of Contents

Industrial Series Controller	8-9
Small Footprint Systems	10-13
Java Sea Series	10
Coral Sea Series	12
High Capacity Systems	14-19
Tasman Sea T-2 Series	14
North Sea Modular Series	16
North Sea N-2 Series	18
Mega Production	20-21
Atlantic Sea Series	20
Custom Systems	22
Accessories	23



Industrial Series Controller

Three configurations for a variety of needs



The Parker Sea Recovery industrial controller is an innovative solution for beginning and experienced water-system operators.

Basic semi-automatic control system

Prevent potential problems with performance monitoring that automatically shuts down when the product tank is full. The touch-screen interface is able to display multiple warning messages that aid in basic maintenance, extending the life of the water system.

Digital control system

A multi-colored touch-screen interface displays maintenance alerts and provides an on-screen help guide. The system also performs automatic start-ups and shutdowns depending on the level of water in the product tank.

Fully automatic control system

This truly automated configuration practically eliminates the need for an operator. Its MODBUS communications package integrates with hosted control systems that allow remote monitoring, ensuring smooth operation.



Basic Control System

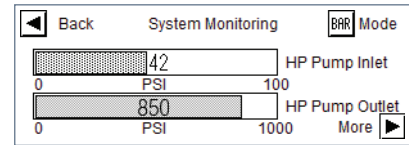
Digital Control System

Interior door / electrical

Controller Features

Basic controller standard features

- 4-inch touch screen interface
- Single point tank level control
- Product salinity monitoring
- Multiple warning messages
- Performance monitoring and alerts
- Automatic start up / shut down function
- Optional basic MODBUS communication package

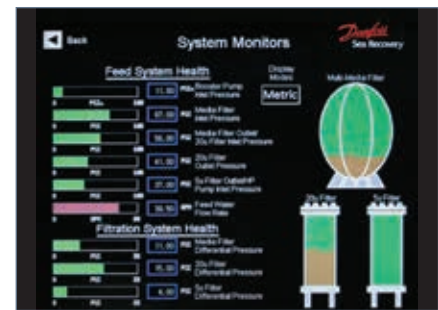


(System pressure monitoring screen)

Digital controller standard features

Includes all basic control standard features plus:

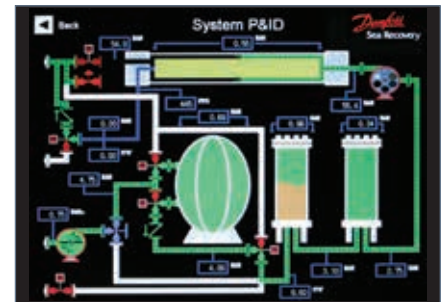
- 8 inch 65K color touch screen interface
- Digital display of all system pressures, flow rates automated valve positions, and filtration system blockages
- Maintenance detection and interactive on-screen help
- Multi-point tank level control
- Chemical injection controls
- Optional multi media filter automation
- Optional full MODBUS communication package



Fully automatic controller standard features

Includes Basic and Digital control standard features plus:

- Automatic fresh water flush
- Automatic media filter backwash
- Automatic pre and post-treatment
- Automatic system pressure regulation
- Automatic back pressure regulation
- Filter element blockage prediction
- Full MODBUS communications package



Available Voltages

Phase	Three	Three	Three	Three	Three	Three
Hz	50	50	50	60	60	60
VAC	220	380	440	208	230	460
FLA	35	35	35	30	30	30
Circuit Breaker Size	125 Amperes	100 Amperes	100 Amperes	125 Amperes	125 Amperes	100 Amperes

Java Sea Series

Large capacity production, small footprint



Parker Sea Recovery's revolutionary Java Sea is engineered to be easier to use and more reliable than conventional watermakers. Featuring the latest technology, the Java Sea is able to regulate and monitor system functions without the need of an operator. With one touch, the Java Sea will start and finish water production automatically.

Automated functions

Standard watermakers require pressure adjustments for water conditions and to produce fresh water - a process that can be very time consuming. Parker Sea Recovery solves this problem by incorporating an automatic pressure regulating system into the Java Sea, allowing the watermaker to balance pressure levels automatically. This feature maximizes operator comfort and convenience.

Longer lifespan, minimal maintenance

The Java Sea's features allow operators to extend its service life. The automatic fresh-water flush and LCD monitoring system optimizes pre-filter and membrane performance. This system will flush every seven days, whether the watermaker is producing water or on standby.



Product features

- **Maximum production:**
925 to 3,200 gallons per day (24 hours)
- **Automatic pressure regulating system**
- **High-efficiency booster pump for extended pre-filter life**
- **Automatic fresh-water flush**
- **One-touch operation**
- **Intuitive, full-color LCD touch screen interface**

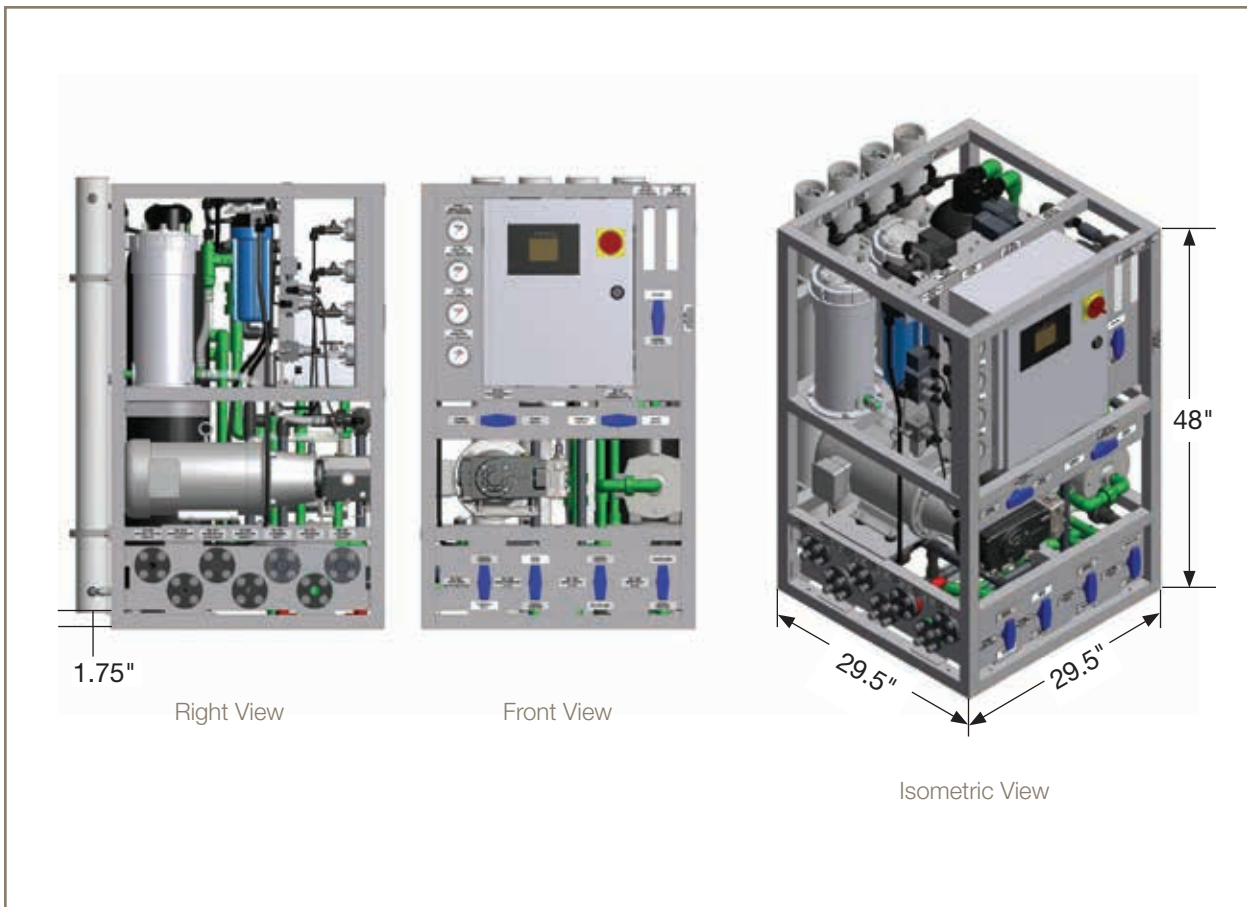
Java Sea System Specifications

Model	Vessel Size	Membrane Config.	Production / Hour	Production / 24 Hrs.	Weight
3.5m ²	3" Membrane	Single	39 gal	925 gal	425 lbs
7m ²	3" Membrane	Single	77 gal	1850 gal	425 lbs
10m ²	3" Membrane	Single	110 gal	2650 gal	425 lbs
12m ²	3" Membrane	Single	132 gal	3200 gal	425 lbs

Electrical Requirements

Power	HP Pump	Booster Pump	FLA
220/60Hz/1PH	5 hp	1 hp	39
230/60 Hz /1 PH	5 hp	1 hp	32
208/60 Hz/3 PH	5 hp	1 hp	22
230/60 Hz/3 PH	5 hp	1 hp	20
460/60 Hz/3 PH	5 hp	1 hp	11

Java Sea Dimensions



Coral Sea Series

State-of-the-art versatile design



Operators will get more out of the new Coral Sea Series of watermakers. Designed in three different configurations, the Coral Sea Series offers flexible installation options, a choice of basic or digital controller configurations, and the reliability, safety and quality that could only be delivered by Parker Sea Recovery

Vertical, horizontal or modular configurations

The Coral Sea Series is available in three different design configurations that accommodate any space. The vertical and horizontal compact aluminum frames are lightweight and corrosion resistant. The modular design allows individual component mounting, perfect for retrofits or new builds.

Industrial PLC control

Integrated performance monitoring and optimization software allows the Coral Sea to display local warnings of potential problems before they become significant performance issues. A one-touch automatic start up/ shutdown function lets operators walk away knowing the system will continue to run at peak efficiency.



Product features

- **Small-footprint, large-volume production, from 2,799 to 6,799 gallons per day**
- **Radial axial pump does not require oil change**
- **Basic and digital controller options**
- **Industrial PLC control**
- **User-friendly color touchscreen**
- **Optional ethernet/MODBUS communication**

Coral Sea System Specifications

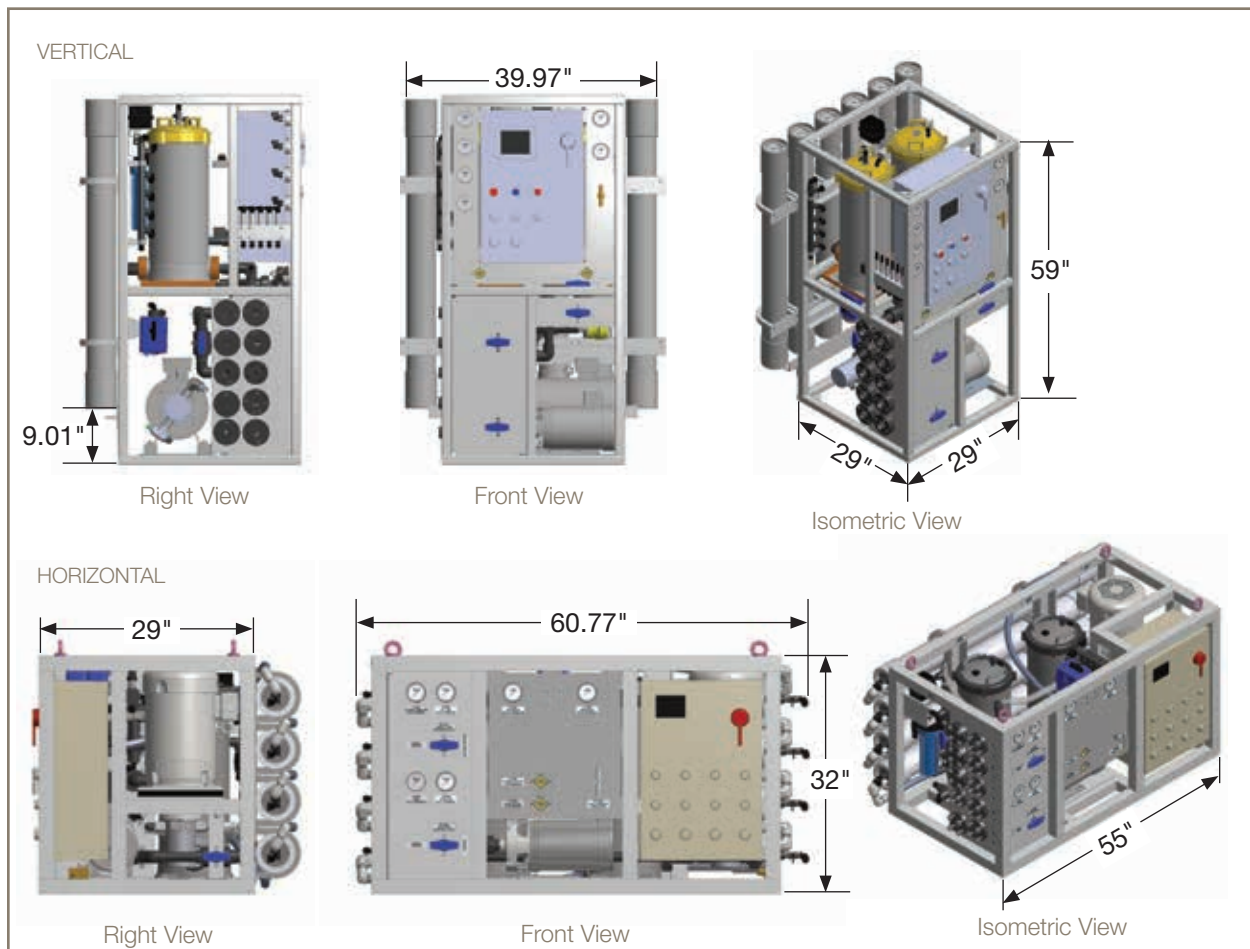
Model	No. of Vessels	Vessel Size	Production / Hour	Production / 24 Hrs.	Weight
2800	4	3"	699 gal	2,799 gal	980 lbs
3600	4	3"	899 gal	3,599 gal	980 lbs
4200	3	4"	1,050 gal	4,200 gal	980 lbs
5200	4	4"	1,299 gal	5,199 gal	1000 lbs
6200	5	4"	1,549 gal	6,199 gal	1020 lbs
6800	6	4"	1,699 gal	6,799 gal	1050 lbs

*All models available in Vertical, Horizontal, or Modular configurations

Electrical Requirements

Power	HP Pump	Booster	FLA	Power	HP Pump	Booster	FLA
230/60Hz/1PH	7.5	2	39	230/60Hz/1PH	N/A	N/A	N/A
208/60Hz/3PH	7.5	2	27	208/60Hz/3PH	10	2	35
230/60Hz/3PH	7.5	2	24	230/60Hz/3PH	10	2	31
460/60Hz/3PH	7.5	2	12	460/60Hz/3PH	10	2	16

Coral Sea Dimensions



Tasman Sea T-2

Reliable service, new modern controls



The Tasman Sea T-2 offers semi-automatic to fully automatic configurations - all complete with touch-screen controls and optional Ethernet and MODBUS remote communication. The Tasman Sea T-2 requires minimal maintenance and is backed by a global team of factory-trained technicians. Parker Sea Recovery continues the tradition of using high-quality parts that have been tested and proven to exceed industry safety standards, giving customers the confidence of choosing the world's most trusted watermaker.

Choose the level of control

Choose from basic, semi-automatic or fully automatic control options. The basic control option features a performance- and error-detection function that displays multiple different user warning messages, helping to prevent major maintenance issues.

Parker Sea Recovery's integrated performance monitoring and optimization software allows the Tasman Sea to display local warnings of potential problems before they become significant performance issues. Its one-touch automatic start up/shutdown function lets operators walk away knowing the system will continue to run at peak efficiency.



Product features

- **Small footprint, large volume production, from 6,720 to 23,775 gallons per day**
- **Radial axial pump does not require oil change**
- **Available with basic, semi-automatic and automatic controller options**
- **Industrial PLC control User-friendly color touchscreen**
- **Optional ethernet/MODBUS communication**

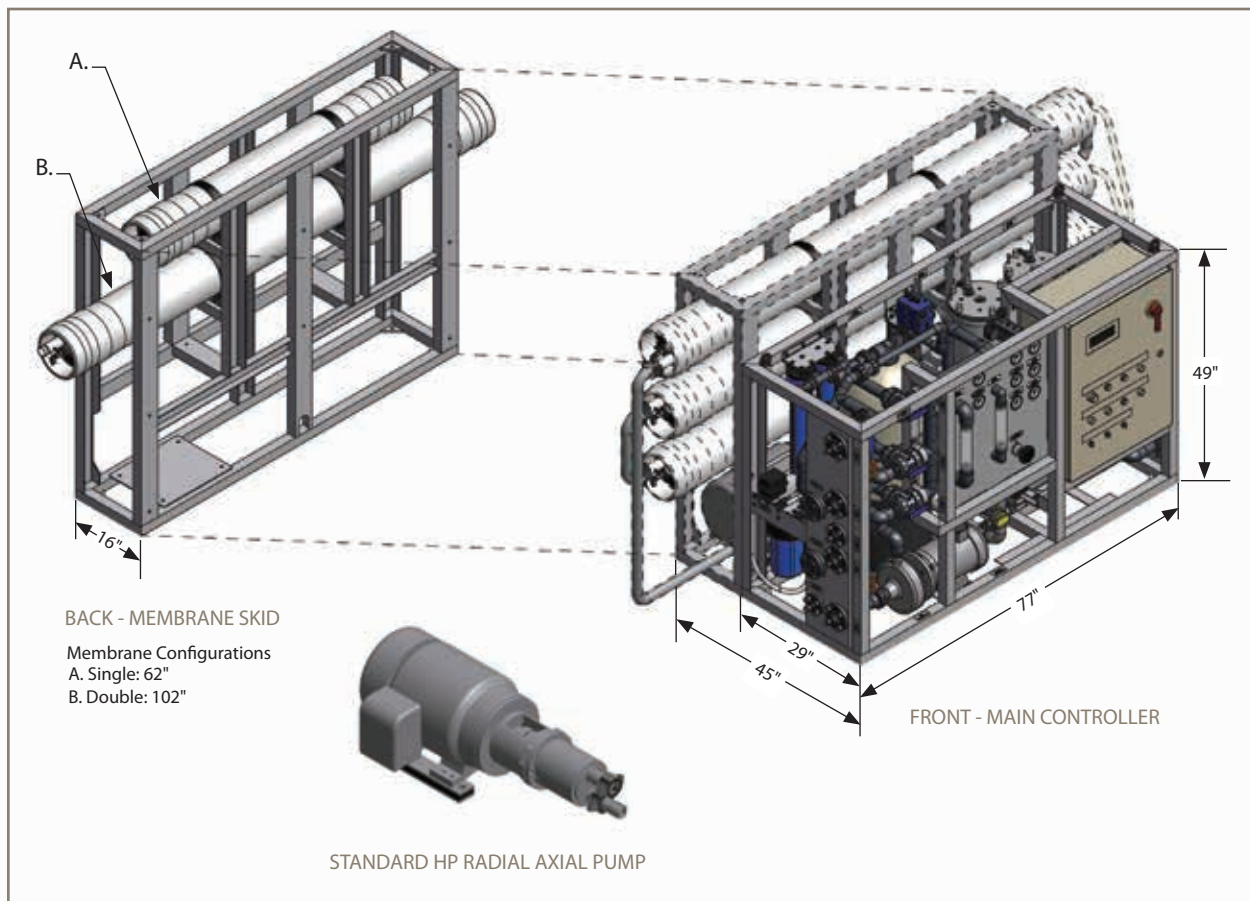
Tasman Sea System Specifications

Model	No. of Vessels	Membrane Configuration	Production / Hour	Production / 24 Hrs.	Weight
25m ³	1	Single	280 gal	6,720 gal	1,900 lbs
45m ³	2	Single	495 gal	11,887 gal	2,100 lbs
45m ³	1	Double	495 gal	11,887 gal	2,100 lbs
60m ³	3	Single	660 gal	15,850 gal	2,200 lbs
72m ³	4	Single	792 gal	19,017 gal	2,400 lbs
72m ³	2	Double	792 gal	19,017 gal	2,400 lbs
90m ³	6	Single	990 gal	23,775 gal	2,400 lbs
90m ³	3	Double	990 gal	23,775 gal	2,400 lbs

Electrical Requirements

Power	HP Pump	Booster Pump	FLA
208 / 60Hz / 3PH	25	7.5	80
230 / 60Hz / 3PH	25	7.5	72
460 / 60Hz / 3PH	25	7.5	38

Tasman Sea Dimensions



North Sea Modular

Easy installation, large production, complete control



In the effort to accommodate the needs of the retrofit market, Parker Sea Recovery has created the North Sea Modular Series. The North Sea Modular Series provides a reliable source of fresh water at large production capacities, with minimal space and maintenance requirements. Its configuration provides maximum utility of space while incorporating ease of control and safety standards.

Modular configuration - perfect for retrofit

The North Sea Modular Series is built to fit through waterproof doors and hatches. This conserves the vessel's original form by virtually eliminating the need for cutting - saving time and money.

Perfect for retrofit or new builds, the North Sea Modular's separate component installation feature accommodates space restrictions. Its robust aluminum frame allows access from any angle for easy maintenance.



Product features

- **Small footprint, large volume production, from 11,887 to 52,834 gallons per day**
- **Radial axial pump does not require oil change**
- **Available with basic, semi-automatic and automatic controller options**
- **Industrial PLC control**
- **User-friendly color touchscreen**
- **Optional ethernet/MODBUS communication**

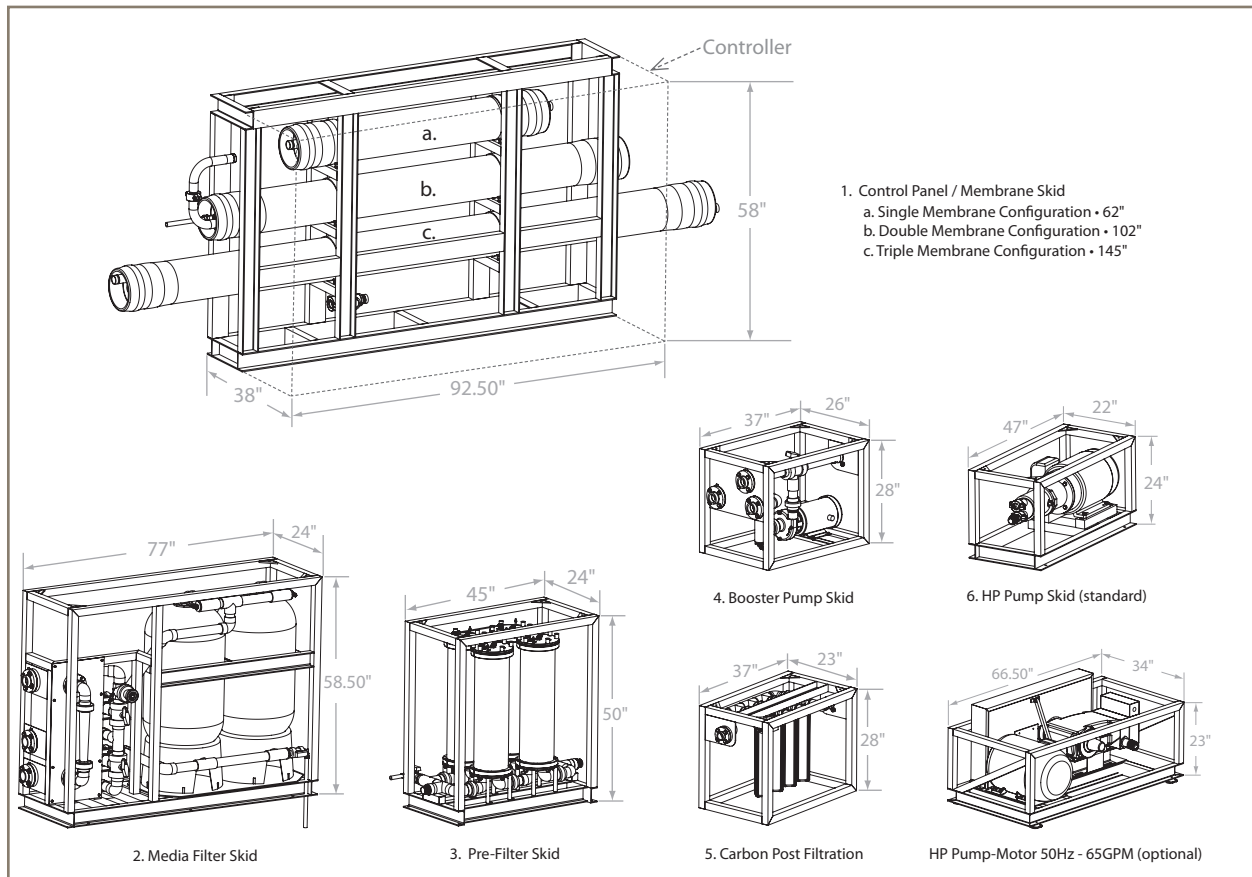
North Sea Modular System Specifications

Model	No. of Vessels	Membrane Configuration	Production / Hour	Production / 24 Hrs.	Weight
45m ³	1	Double	495 gal	11,887 gal	3,700 lbs
85m ³	2	Double	935 gal	22,454 gal	4,000 lbs
105m ³	3	Double	1,155 gal	27,738 gal	4,300 lbs
145m ³	4	Double	1,595 gal	38,299 gal	4,800 lbs
175m ³	6	Double	1,926 gal	46,230 gal	5,400 lbs
175m ³	4	Triple	1,926 gal	46,230 gal	5,400 lbs
200m ³	6	Triple	2,201 gal	52,834 gal	6,300 lbs

Electrical Requirements

System	Data	208/60Hz/3PH	230/60Hz/3PH	460/60Hz/3PH
45m ³	Full Horse Power - HP Pump	25 hp	25 hp	25 hp
	Full Horse Power - Booster	7.5 hp	7.5 hp	7.5 hp
	FLA	77	72	36
85m ³ • 105 m ³	Full Horse Power - HP Pump	25 hp	25 hp	25 hp
	Full Horse Power - Booster	7.5 hp	7.5 hp	7.5 hp
	FLA	81	84	42
145m ³ - 200m ³	Full Horse Power - HP Pump	50 hp	50 hp	50 hp
	Full Horse Power - Booster	7.5 hp	7.5 hp	7.5 hp
	FLA	140	130	65

North Sea Modular Dimensions



North Sea N-2 Series

The reliable choice for unlimited fresh water production



The North Sea N-2 Series is the top choice of the offshore and commercial marine industry. It has the capacity to provide up to 200 metric tons of fresh water per day. With minimal space and maintenance requirements, the new North Sea N-2 has multiple controller configuration options, and provides maximum utility of space while incorporating ease of control and safety standards.

Choose the level of control

Choose from basic, semi-automatic, or fully automatic control options. The basic control option features a performance- and error-detection function that displays multiple user warning messages to help prevent major maintenance issues.

The North Sea N-2 high pressure pump is the most compact and efficient pump on the market. This HP pump has flexible installation options that don't require frames, belt drives or gear boxes. The HP pump is water lubricated, corrosion resistant (Super Duplex), and completely eliminates membrane fouling caused by oil leaks. This innovative HP pump provides constant flow regardless of variations in pressure while delivering a total efficiency of up to 97 percent.



Product features

- Produces 11,887 to 52,834 gallons per day
- Radial axial pump does not require oil change
- Available with basic, semi-automatic and automatic controller options
- Industrial PLC control
- User-friendly color touchscreen
- Optional ethernet/MODBUS communication

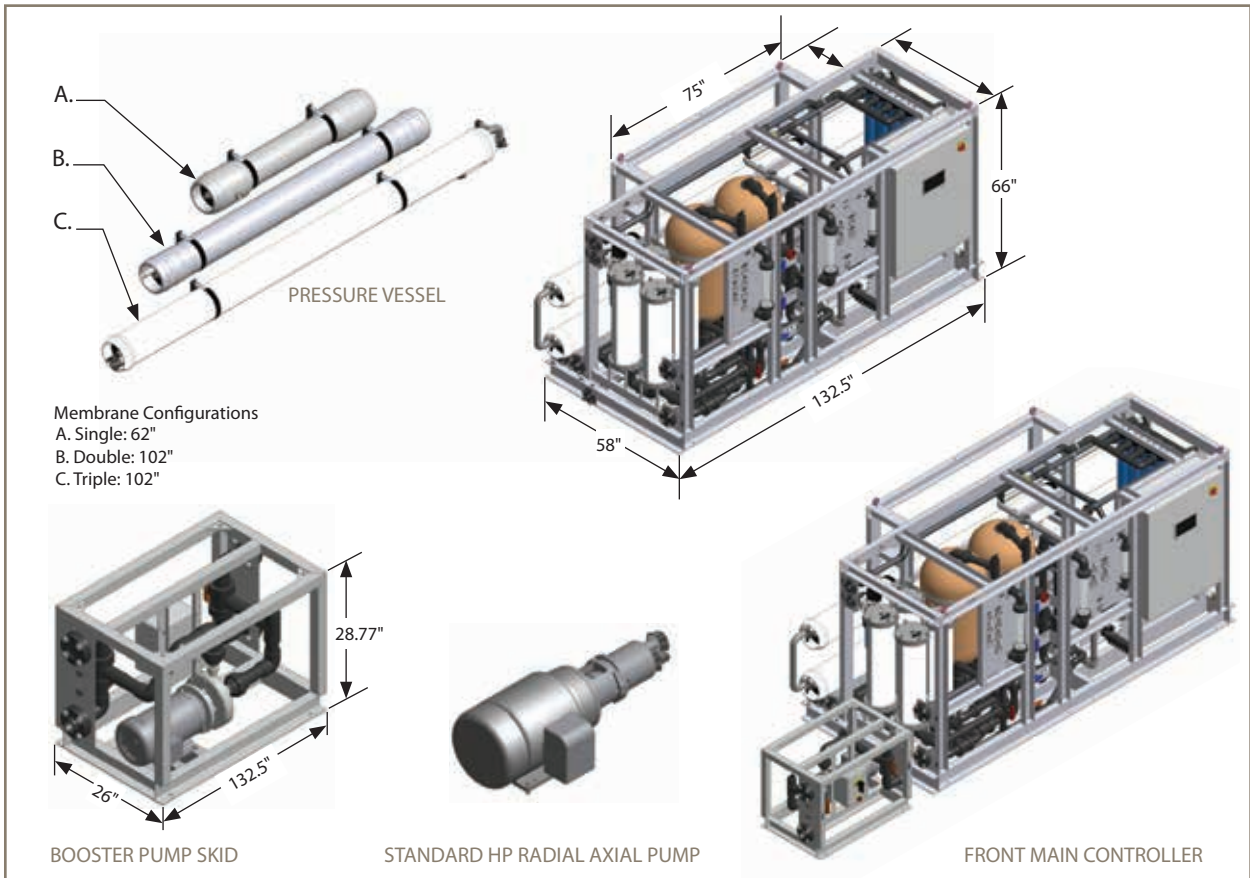
North Sea N-2 System Specifications

Model	No. of Vessels	Membrane Configuration	Production / Hour	Production / 24 Hrs.	Weight
45m ³	1	Double	495 gal	11,887 gal	3,700 lbs
85m ³	2	Double	935 gal	22,454 gal	4,000 lbs
105m ³	3	Double	1,155 gal	27,738 gal	4,300 lbs
145m ³	4	Double	1,595 gal	38,299 gal	4,800 lbs
175m ³	6	Double	1,926 gal	46,230 gal	5,400 lbs
175m ³	4	Triple	1,926 gal	46,230 gal	5,400 lbs
200m ³	6	Triple	2,201 gal	52,834 gal	6,300 lbs

Electrical Requirements

System	Data	208/60Hz/3PH	230/60Hz/3PH	460/60Hz/3PH
45m ³	Full Horse Power - HP Pump	25 hp	25 hp	25 hp
	Full Horse Power - Booster	7.5 hp	7.5 hp	7.5 hp
	FLA	77	72	36
85m ³ • 105 m ³	Full Horse Power - HP Pump	25 hp	25 hp	25 hp
	Full Horse Power - Booster	7.5 hp	7.5 hp	7.5 hp
	FLA	81	84	42
145m ³ - 200m ³	Full Horse Power - HP Pump	50 hp	50 hp	50 hp
	Full Horse Power - Booster	7.5 hp	7.5 hp	7.5 hp
	FLA	140	130	65

North Sea N-2 Dimensions



Atlantic Sea Series

Safe, reliable and supported
anywhere in the world



The Atlantic Sea is Parker Sea Recovery's largest series of SWRO systems. Its features include a small footprint and fully automatic controls with the capability to produce up to 1,200 metric tons per day. The Atlantic Sea also boasts the lowest consumption of energy per ton of water produced. This system is perfect for those who require an unlimited amount of fresh water anywhere at anytime.

Efficiently productive

From its fully automated controller to its low maintenance HP pump and its I-Save energy recovery system, the Atlantic Sea flawlessly delivers high production capacities. Its automated controller is easy to operate and allows real-time remote monitoring of essential system functions.

The Atlantic Sea's high pressure pump is the most compact and efficient pump on the market. Its flexible installation doesn't require frames, belt drives or gear boxes. The HP pump is corrosion resistant and completely eliminates oil leaks and membrane fouling caused by oil leaks.

The Atlantic Sea is capable of instant-on start-up that allows the system to produce usable, fresh water within minutes.



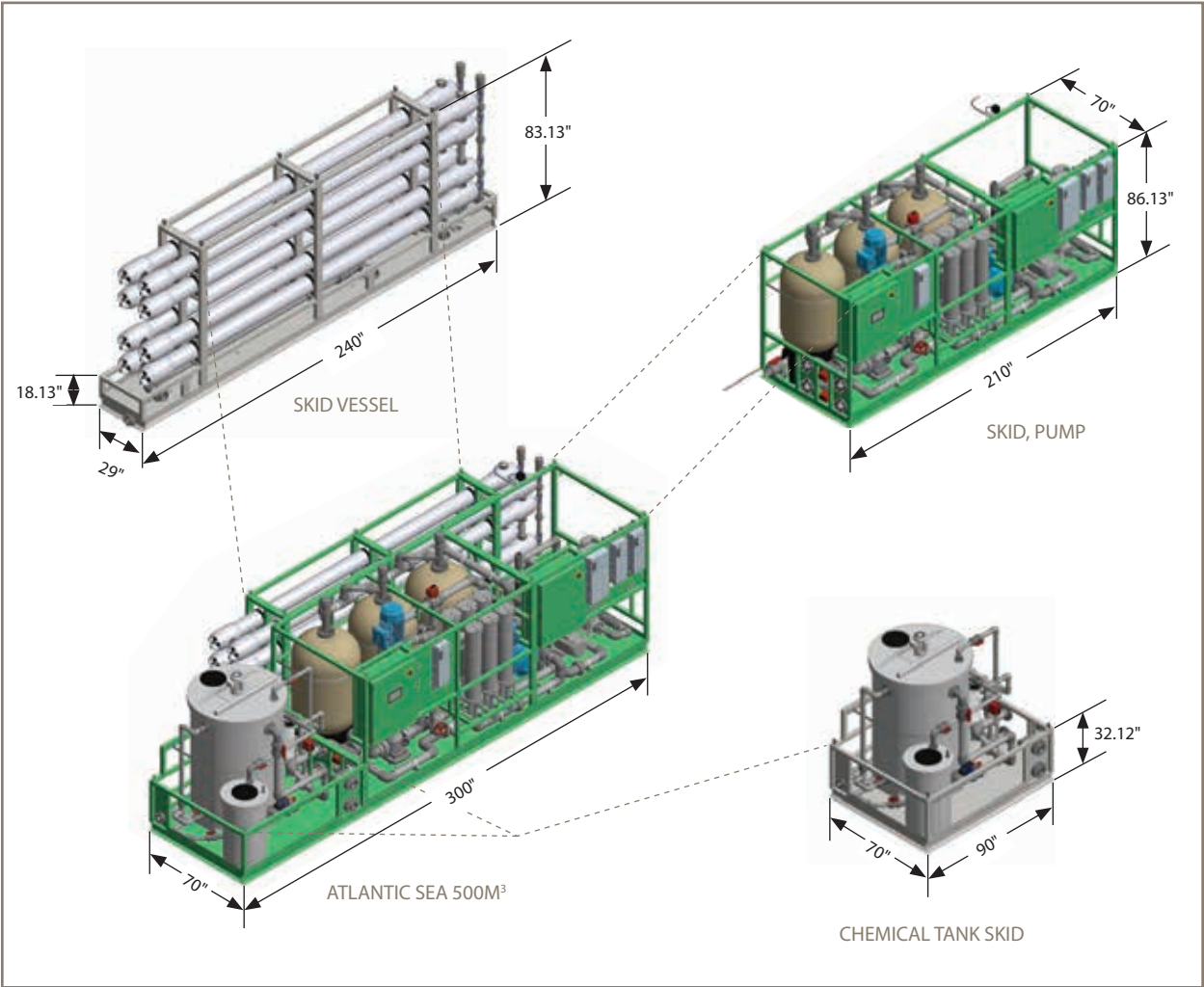
Product features

- **Mega production - up to 1,200 metric tons per day**
- **Digital control with standard MODBUS**
- **Low-maintenance HP pump**
- **I-Save energy recovery system**
- **One-touch start up with instant-on feature**

Atlantic Sea System Specifications

System Production	Energy Recovery Available / Type	No. of Membranes	Production / Hour	Production / 24 Hrs.	Estimated Energy Savings Per M ³ of Water Produced
250 M ³	YES / I-SAVE	12	2,752 gal	66,043 gal	40%
300 M ³	YES / I-SAVE	16	3,302 gal	79,252 gal	40%
400 M ³	YES / I-SAVE	20	4,403 gal	105,669 gal	44%
500 M ³	YES / I-SAVE	30	5,504 gal	132,086 gal	44%
600 M ³	YES / I-SAVE	50	6,604 gal	158,503 gal	44%
750 M ³	YES / I-SAVE	60	8,255 gal	198,129 gal	44%
1000 M ³	YES / I-SAVE	100	11,007 gal	264,172 gal	48%
1200 M ³	YES / I-SAVE	120	13,209 gal	317,006 gal	49%

Atlantic Sea Dimensions



Customized Systems

Designed to meet unique needs

Parker Sea Recovery's advanced water systems are capable of being customized to the special needs of individual customers. The company works closely with customers to meet all specifications, whether it's for customized parts, production capacities or a complete customized re-design. Parker Sea Recovery's customized reverse-osmosis water systems provide the same advanced technologies as standard systems and are delivered and commissioned to any location in the world. A typical delivery time for customized systems ranges from 10 to 12 weeks.

Design

After receiving specifications, Parker Sea Recovery's engineers and system designers create a system that is designed to meet or exceed client specifications. Once the final design is approved by the customer, the dedicated Parker Sea Recovery team of specialists begins building a system that will look and function to agreed standards.

Build

Customized systems are given as much attention as our standard systems. Always at the lead in industry standards, Parker Sea Recovery water systems are built with quality components and materials, incorporating advanced electronics and modern user interfaces that allow ease of operation and maintenance. The Parker Sea Recovery development process also includes extensive testing to the system will run flawlessly and adhere to safety standards once in full operation.

Delivery and Commissioning

Parker Sea Recovery's local sales representatives work closely with customers to ensure their system is delivered and commissioned promptly and properly. With service specialists located in every part of the world, Parker Sea Recovery has local assistance always at the ready. Typically a completely re-designed custom system can be delivered in about 12 weeks.



Accessories and Consumables



Fresh Water Flush
Prolong membrane life at the touch of a button.



pH Neutralizer
Restore product water to a neutral state or level.



Hydrocyclone Separator
Has no filters or moving parts and extends the life of pre-filters and elements.



Chemical Cleaning Tank
Restore membrane productivity and reduce bio-fouling.



UV Sterilizer
Eliminates 99.8 percent of bacteria and viruses from the feed water.



Chemical Injection
Control the chemistry of the feed water to reduce and prevent fouling..



Media Filter
Traps suspended solids larger than 30 microns. Helps extend pre-filter element life.

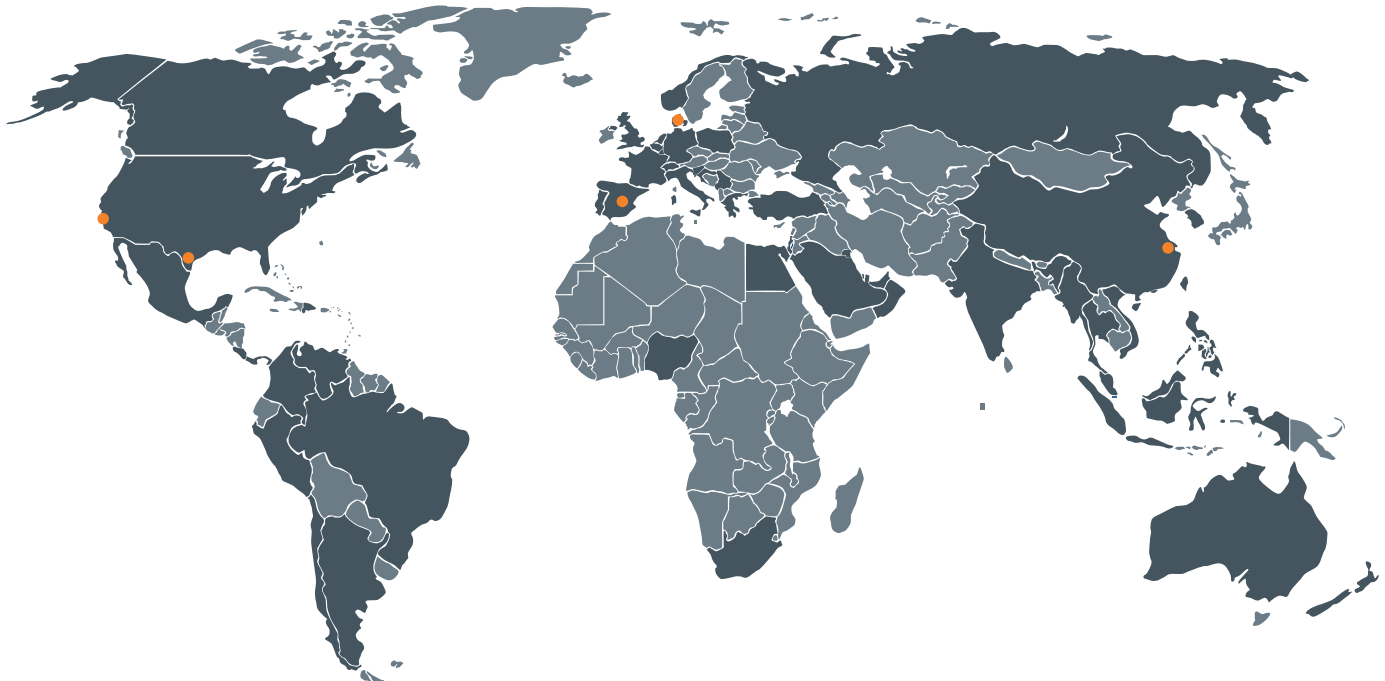
Consumables and Spares

Only Parker Sea Recovery's genuine replacement consumables and spares will ensure the quality and function of each Parker Sea Recovery watermaker system. Cleaning and storage compounds help prolong the life of the watermaker, and eliminate unnecessary buildup that can lead to extra maintenance. Contact a Parker Sea Recovery dealer to order spare replacements.



To find a dealer or for service and parts, contact Parker Sea Recovery
Tel: 1 (800) 354-2000 | Email: sales@searecovery.com

Worldwide Agents and Dealers



● Local Factory Sales Offices

■ Agents and Distributors

Visit our website to find a dealer, agent or service technician near you.

www.searecovery.com

Authorized Representative:



Parker Hannifin Corporation

Sea Recovery

PO Box 5288

Carson, CA 90745-5288

Tel: 1 310 637 3400

Fax: 1 310 637 3430

srcsales@searecovery.com



aerospace
climate control
electromechanical
filtration
fluid & gas handling
hydraulics
pneumatics
process control
sealing & shielding



Parker Village Marine Water Desalination Systems



ENGINEERING YOUR SUCCESS.



Parker Village Marine

Forward Thinking in Reverse Osmosis Engineering

For over 30 years, Parker Village Marine (VMT) has developed innovative water desalination and purification plants for some of the most challenging environments – the middle of the ocean, 800 feet below the sea, offshore oilrigs, deserts, and disaster areas.

NASA and FEMA relied on Parker Village Marine to develop a self-contained reverse osmosis plant for its disaster relief program. The Navy asked Parker Village Marine for water so pure, it could be used with the nuclear reactors on its submarines. Catalina Island sought our help to ensure a steady water supply in drought conditions. When Hurricane Katrina hit New Orleans, the Army counted on us to keep a hospital open. The research required for high-profile government projects has enabled Parker Village Marine engineers to develop innovative ways to produce the most reliable RO systems in the world.

Always ready to respond.

Parker Village Marine's entire team is prepared to meet the needs of its customers and distributors at any time. Parker Village Marine's flexibility quickly takes ideas from concept to reality and enables the development of field-proven systems to meet the requirements of any application, in any environment, around the world.

A legacy of performance.

Parker Village Marine received the prestigious Aegis Excellence Award as the only RO supplier to excel in quality and delivery, surpassing U.S. Navy expectations. After the first Parker Village Marine reverse osmosis system

was designed and installed on the U.S. Navy Submarine USS Dolphin in 1983, the systems had to undergo rigorous testing before additional installations could be approved. Passing every test, Parker Village Marine's plants worked flawlessly, 24/7 for 90 days straight.

Fresh water for every vessel.

Our customers enjoy all of the luxuries of home – drinking water, ice, showers, dishwashers, and laundry – onboard. A complete range of reliable, power-efficient watermakers for sailboats, motorboats and yachts, as well as custom equipment, is available for quick delivery and allows our customers to cruise with confidence.

Without the noise.

Parker Village Marine's experience in designing RO systems for Navy submarines has helped us create the quietest leisure and commercial watermakers on the market. A five-plunger pump, a pressure regulation system and other carefully chosen components are engineered in as standard in many of the systems to reduce noise and vibration.

The ultimate barrier to impurities.

Salts, minerals and organics are no match for Aqua Pro® spiral wound membranes, which remove impurities from seawater, brackish water, fresh water and tap water. Nano and ultra filtration membranes are also available. Proven processes are used in the design, development, testing and manufacturing of Aqua Pro spiral wound membranes. This dedicated attention to detail includes using the

highest grade of polyamide thin-film composite materials for standard and custom membranes to ensure their ultimate performance and integrity. Parker Village Marine also manufactures cartridge and string filters to fit standard and custom filter housings.

Quality at the source.

The superior quality components that go into Parker Village Marine systems ensure that each one is built to the highest standards for safety, maintainability and reliability. The highest grades of raw materials are precisely machined and thoroughly tested to exacting customer requirements and industry specifications. By controlling the source and processes from the raw material to the final product, lead times are reduced to achieve on-time delivery, every time.

Providing the most innovative and reliable RO purification systems for seawater, brackish water and tap water, from energy-saving 145 GPD watermakers to high-performance 100,000 GPD system is what has established Parker Village Marine as a leader in industry.

Meeting the fresh water requirements of military ships to working marine vessels to luxury yachts to seaside properties has always been the mission of Parker Village Marine. A global leader in the innovative application of reverse osmosis technology.



Aegis Excellence Award

Table of Contents

Parker Village Marine Overview.....Inside Front Cover
The Inside Story.....2-3
Leisure Marine
Stowaway (STW) Series.....4
Little Wonder Modular (LWM) Series.....5
Sea Quencher (SQ) Series.....5
Pure Water Vertical Series.....6
LT Series.....7
Commercial Marine
Pure Water (PW) Series..... 8-9
LTM Series.....9
LT Commercial Series..... 10
Bilgewater Membrane Separator (BMS).....11
Bilgewater Adsorbent Separator (BAS).....11
Offshore Oil & Gas
PW-XP Series.....12
Sea Water (SW) Series.....13
CC Series.....13
Disaster Relief
LB-20K Watermaker.....14
RUF-25 & RUF-30 Watermakers.....15
Defense
The Leader in MIL-SPEC 16-17
Accessories & Options
AquaPro® Membranes and Filters..... 18
AquaPro® Pumps.....19
Spares and Consumables 20

Master Control Panel 20
Pressure Vessel Assemblies 21
Ultraviolet Light Germicidal System 21
Commercial Media Filtration Systems..... 21
Filter Housings 21
RMF Remineralizer Systems..... 22
IMF Media Filtration Systems 22
Racor Products and Systems.....23
Parker’s Motion & Control Technologies..... 24
Parker VMT Sales Contacts.....Inside Back Cover
Worldwide Manufacturing
Locations..... Outside Back Cover



WARNING – USER RESPONSIBILITY

FAILURE OR IMPROPER SELECTION OR IMPROPER USE OF THE PRODUCTS DESCRIBED HEREIN OR RELATED ITEMS CAN CAUSE DEATH, PERSONAL INJURY AND PROPERTY DAMAGE.

- This document and other information from Parker-Hannifin Corporation, its subsidiaries and authorized distributors provide product or system options for further investigation by users having technical expertise.
- The user, through its own analysis and testing, is solely responsible for making the final selection of the system and components and assuring that all performance, endurance, maintenance, safety and warning requirements of the application are met. The user must analyze all aspects of the application, follow applicable industry standards, and follow the information concerning the product in the current product catalog and in any other materials provided from Parker or its subsidiaries or authorized distributors.
- To the extent that Parker or its subsidiaries or authorized distributors provide component or system options based upon data or specifications provided by the user, the user is responsible for determining that such data and specifications are suitable and sufficient for all applications and reasonably foreseeable uses of the components or systems.

The **Inside** Story



STW Series Watermaker



Glycerin filled, high and low pressure gauges



Integral, closed loop cleaning system

Corrosion resistant, powder coated, aluminum frame



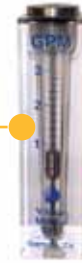
Touchscreen panel allows complete watermaker control at your fingertips. Remote control panel is included as standard equipment.

To maintain peak performance always use genuine Parker Village Marine replacement parts. We reserve the right to change our specifications or standards without notice.



High pressure bypass valves, 316 Stainless Steel

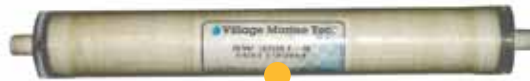
Corrosion resistant fresh water and brine flow meters



Industrial Strength reinforced high pressure hose with Titanium wetted fittings



Industrial grade, pleated pre-filtration



Custom made seawater membranes



Aqua Pro, Triplex Titanium pump for low vibration and low noise with unsurpassed corrosion resistance.



TRUE 316 Stainless Steel high pressure regulator - Eliminates risk of over pressurization

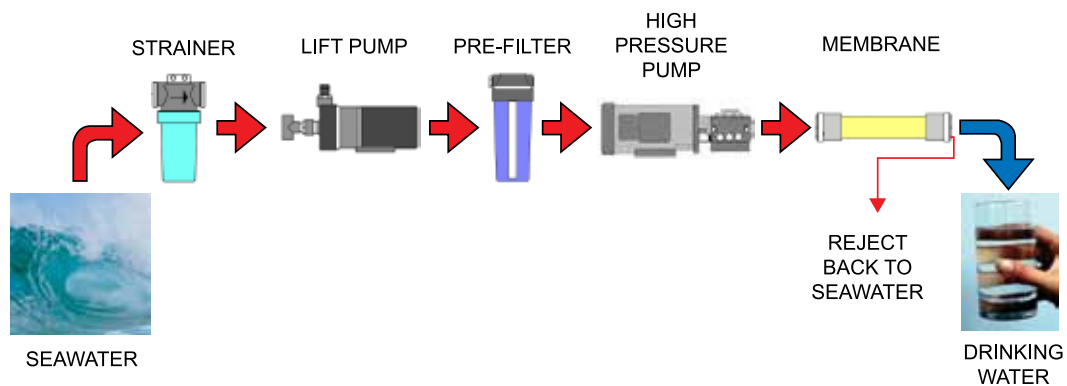


Fiberglass pressure vessels



Corrosion resistant, machined nylon end caps and manifolds

Reverse Osmosis System





Stowaway Series

400-800 GPD (1,500-3,000 LPD)
For powerboat and ocean yachts applications



Village Marine - Stowaway
(See bulletin no. 7861)

The Stowaway Series offers fresh water independence for ocean crossings, extended fishing trips or cruising where dock supplies are unreliable.

The Stowaway Series features a semi modular frame format, which maximizes installation flexibility. The frame is compact and can be above or below water line. The boost pump and prefilters are supplied as loose items. The watermaker can be operated and monitored from the electronic remote control.

Key Features:



Aqua Pro® Pump 708-3

Triplex Titanium pump for low vibration and low noise with unsurpassed corrosion resistance.



Remote Control Panel

Touchscreen panel allows complete watermaker control at your fingertips. Remote control panel is included as standard equipment.

Little Wonder Series

145-200 GPD (550-760 LPD)

For sailboat applications



Parker VMT-LWM Modular
with Pump/Motor

The Little Wonder (LW) is the watermaker of choice for the experienced sailor. The Little Wonder comes equipped with a corrosion resistant, single piston, belt driven, low RPM high-pressure pump. Result is the most reliable, field serviceable, quiet, efficient and economical source of fresh water available in the industry. Available in modular configurations with water output ranging from 145 to 200 GPD.

The modular Little Wonder watermakers are designed for cruising sail boats where space is limited and reliability is required.

(See bulletin no. 7829)

Optional Accessories



Optional salinity monitor and diversion valve available

(See bulletin no. 7972)



Optional remote instrument panel available for modular units

Sea Quencher Series

145-200 GPD (550-760 LPD)

For powerboat and sailboat applications



Parker Village Marine Sea Quencher (SQ) Series offers durable, high value desalination systems. Driven by AC or DC power, the Sea Quencher models use low electrical consumption in relation to their water production. The SQ Series is a best value for the investment and are in operation around the world.

SQ 200 Sea Quencher (760 LPD)

(See bulletin no. 7829)



Pure Water Vertical Series

800-2,000 GPD (3,000-7,500 LPD)

For large yachts, commercial marine applications and seaside properties



VMT-PWV2000 Vertical Frame System with front door open for maintenance access. (7,500 LPD)

(See bulletin no. 7913)

With the same high quality features of the horizontal Pure Water Series, the vertical frame Pure Water Series offers a more compact foot print for flexible installation options and optimal use of space. All components are on a single skid, in one frame, and include a multi-media pre-filter and flush system.

If the requirement is high volume potable water, delivered on a reliable basis, in a harsh environment, the Village Marine Pure Water Series in either configuration meets the requirements.



PWV2000
Door closed
(7,500 LPD)

LT Series

400-1,800 GPD (1,500-6,750 LPD)

For power boats, sailboats and commercial vessels applications



LT 800 (3,000 LPD) (See bulletin no. 7935)

Key Features:



Models 400 and 600 can be configured with membranes mounted on top or back of frame.



Optional Remote with water quality indicator, comes with 50 ft. cable. P/N 90-0119

The LT desalinator offers fresh water independence for ocean crossings, extended voyages or cruising where dock water supplies are unreliable.

The units feature a semi modular frame format, for installation flexibility. The frame is compact and can be above or below the water line. The boost pump and prefilters are supplied as loose items.



Commercial Marine



Pure Water Series

400-2,000 GPD (1,500-7,500 LPD)



VMT-PW 400-2,000 GPD (1,500-7,500 LPD)
Horizontal Frame System (See bulletin no. 7783)



VMT-PW 400-2,000 GPD (1,500-7,500 LPD)
Semi-Modular System
(See bulletin no. 7783)

Manual Fresh Water Flush

The Pure Water (PW) Series is designed to provide installation flexibility, superior performance, and extended service life in the most rugged conditions. Designed for 24/7, continuous-duty applications, where reliable fresh water supply is critical.

The fully framed unit is standard, however semi-modular and fully modular versions are also available.

Key Feature



At the core of each PW series watermaker are the AquaPro® high rejection seawater membranes to ensure high quality potable water supply.

Pure Water Series

3,000-20,000 GPD (11,000-75,500 LPD)



VMT-PW 3,000-20,000 GPD
(11,000-75,500 LPD)
Horizontal Frame System (See bulletin no. 7831)

Key Feature



At the core of each PW series watermaker is the Aqua Pro 3 or 5 plunger titanium high pressure pump.

LTM Series Modular Watermaker

500-1,800 GPD (1,800-6,800 LPD)



(See bulletin no. 7986)

The PW Series reverse osmosis desalination systems are the preferred choice of fresh water generating equipment for the most discriminating marine operators (such as major oil companies, The United States Navy, The United States Coast Guard and The Cousteau Society).

Thousands of installations have proven this series to be the most reliable on the market. They are designed to provide performance and longevity under the most rugged conditions.

Modular Configuration



The LTM Series offers high quality Parker Village Marine engineered components with straightforward manual operation. Driven by AC motors (from genset power), the modular configuration comes in ready to mount modules for flexible installation options. Integral to every LTM unit are a stainless steel pressure regulator and bypass valve.

Key Feature



Optional salinity monitor and diversion valve system for water quality assurance.

Salinity monitor and diversion valve

(See bulletin no. 7972)



LT Series

3000-7000 GPD (11,000-26,000 LPD)
Practical and reliable fresh water supply



(See bulletin no. VMT0001)

The LT desalinator offers a simple watermaker package with a compact frame and small footprint.

Parker VMT LT systems have a base frame only 40" wide x 33" deep, allowing a high capacity and high quality watermaker installation in a tight space.

Key Feature

Installation Flexibility



LT units can be supplied with an optional media filter system. Also membrane rack can be mounted horizontally or as a module for remote bulkhead mounting.

(See bulletin no. VMT0001)

Bilgewater Membrane Separator

BMS-350, BMS-500,
BMS-1000, BMS-2000,
and BMS-2500

Parker VMT's oily water separators meet the IMO Resolution MEPC 107(49). Parker VMT units are an advanced three-stage system optimizing the separation and removal of free and emulsified oils.

Heavy duty construction, corrosion resistant materials, permanent oil attractant media, quiet operation, automatic diversion valves and advanced Parker VMT membrane technology result in an easy to use, fully automated, high quality, affordable solution to meet your bilgewater treatment needs.

(See bulletin no. 7882)



Key Features

- USCG Certified to meet IMO MEPC 107(49) regulations
- MEPC 107(49) certified oil content monitor included
- Advanced three-stage design for maximum oil separation
- Fully automated system
- Parker VMT membrane technology specifically designed for bilgewater treatment
- System employs a self-cleaning cycle for prolonged membrane service life
- Certified compliant with European Union Marine Directive 96/98/EC section A.1/2.1 Oil Filtering Equipment

Bilgewater Adsorbent Separator

BAS-500, BAS-1000,
BAS-2000, and BAS-2500

Heavy duty construction, corrosion resistant materials, permanent oil attractant media, quiet operation, automatic diversion valves and advanced oil adsorbent media technology result in an easy to use, high quality, affordable solution to meet your bilgewater treatment needs. (See bulletin no. VMT0014)



Key Features

- USCG Certified to meet IMO MEPC 107(49) regulations
- MEPC 107(49) certified oil content monitor included
- Advanced three-stage design for maximum oil separation
- Automated oil flush system
- Compact design minimizes installation requirement
- Certified compliant with European Union Marine Directive 96/98/EC section A.1/2.1 Oil Filtering Equipment

Offshore Oil & Gas



Offshore PW-XP Series

Explosion proof desalinators

3,000-20,000 GPD (11,000-75,500 LPD)



(See bulletin no. 7857)

Explosion proof configuration available:

- NEC rating, class I, division I, group D
- IEC 60079-10 Electrical apparatus for explosive gas atmospheres
Zone 2 hazardous area, gas group IIA,
temp class T3

The PW-XP reverse osmosis desalination systems are based on the very popular PW series. They are the preferred choice of fresh water generating equipment for the most discriminating marine operators (such as major oil companies, the US Navy, the US Coast Guard and the Cousteau Society).

The PW series represents years of refinement to packaged RO system design, and provides a better value over custom designed systems.

Key Feature



Explosion proof control box with E-stop and metallic cable glands; connected with armored cables

Sea Water Series

24,000-40,000 GPD (91,000-150,000 LPD)

For offshore rigs, work camps, seaside properties and cruise ships



SW Series
Front side view



Right side view



Back side view

The Sea Water Series reverse osmosis desalination systems are designed to provide potable water in demanding environments. Its rugged, efficient design allows high through-put of water with minimum electric power use. The Sea Water Series systems are quiet because the mounting of the motors and Aqua Pro pumps isolates and minimizes vibration transfer to the vessel's hull or the RO system enclosure.

Parker Village Marine - SW32 model is installed on a single skid with two complete, independent RO systems. The two trains can run together or can be operated on a duty/stand by basis. Top quality components, manufactured by Parker Village Marine, provide maximum corrosion resistance. Straight-forward, easy to understand controls, result in reliable operation. (See bulletin no. 7832)

CC Series

2,000-26,000 GPD

(7,500-100,000 LPD)

For Offshore MODU, FSO, FPSO, and drill ships



CC-3000

The CC Series watermakers provide engineered solutions to meet customer specifications in harsh offshore applications. Each one is configured with all accessories in a single box frame. Various pre-treatment and post-treatment options are available.

(See bulletin no. 7982)

Key Feature



Aqua Pro Pump 5 Plunger Titanium Head



Portable Container Mounted Watermaker

LB-20K



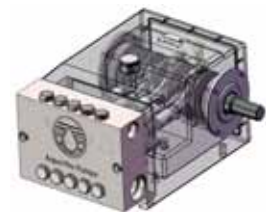
Portable Container Mounted Watermaker LB-20K
(See bulletin no. VMT0006)

Parker Village Marine LB-20K is a complete watermaker system to convert seawater, brackish water or contaminated water into drinking water. Comes complete with generator, supply pump and storage tanks to go into operation quickly. Standard 20 foot ISO container can be transported by road, rail or by sea. Ready to deploy wherever temporary or emergency potable water is required.

Key Features



Collapsible storage tanks



Titanium head 5P70 high pressure pump

Parker Ultra Filter

RUF-25 and RUF-30



RUF-25 shown with solar panels

Parker Village Marine RUF units provide fresh water filtration that is truly portable and independent. The RUF-25 or RUF-30 will process 25 or 30 gallons per hour from 12 volt vehicle auxiliary power (cigarette lighter). Optional lightweight folding solar power version provides 25 gallon per hour production from sunlight. Water treatment includes 20 micron sediment filtration, carbon filtration, ultrafiltration membranes and ultraviolet radiation.

Note: the RUF systems are not for seawater or brackish water applications.

(See bulletin no. VMT0028)

Key Features



Solar power option panels fold for stowage on top of the backpack frame



RUF-30 Hard shell case provides convenient storage and transport

- ▶ RUF-25 with solar
Setup time is 5 to 10 minutes after deployment



The Leader in MIL-SPEC Reverse Osmosis Desalination Systems

For over 30 years Parker Village Marine has been the leading supplier of RO desalination equipment to the US Navy and US Coast Guard. We are proud that our steadfast commitment to the design, engineering and manufacture of the worlds most advanced RO equipment has

helped improve the quality of life while underway for the men and women who serve. From potable water for drinking and showers to high-purity permeate for reactor-grade applications, Parker Village Marine Tec. is your choice for fresh water from the sea.

Our in-house design, manufacturing and testing capabilities coupled with our synergistic family of companies are unequalled in the industry and uniquely position Parker - Village Marine Tec. to provide the toughest most reliable MIL-SPEC RO equipment.

USN surface fleet installations

- ARLEIGH BURKE CLASS (DDG)
- SPRUANCE CLASS (DD)
- TICONDEROGA CLASS (CG)
- TARAWA CLASS (LHA)
- AVENGER CLASS (MCM)
- OSPREY CLASS (MHC)
- FREEDOM CLASS (LCS)
- CYCLONE CLASS (PC)
- SAN ANTONIO CLASS (LPD 24 AF)

USN submarine fleet installations

- LOS ANGELES CLASS (SSN)
- OHIO CLASS (SSBN / SSGN)
- SEAWOLF CLASS (SSN)
- VIRGINIA CLASS (SSN)

USN carrier fleet installations

- ENTERPRISE CLASS (CVN-65)
- GERALD R. FORD CLASS (CVN-78)

USCG installations

- POLAR CLASS (WAGB)
- JUNIPER CLASS (WLB)
- KEEPER CLASS (WLM)
- MARINE PROTECTOR CLASS (WPB)
- ISLAND CLASS (WPB)
- RELIANCE CLASS (WMEC)
- FAMOUS CLASS (WMEC)

Design engineering standards

- MIL-STD-901 (Shock)
- MIL-STD-167 (Vibration)
- MIL-STD-461 (EMI)

Quality assurance

- MIL-I-45208A
- T9074-AS-GIB-010/271
- Dye Penetrant
- Magnetic Particle
- Ultrasonic

Fabrication and weld standards

- NAVESEA
S9074-AH-GIB-010/22

- NAVESEA
S9074-AR-GIB-010/278
- NAVESEA
S9074-AQ-GIB-101/248

Materials and processes

- GMAW/GTAW
- NiCu 400
- Titanium
- Hastelloy C276
- CuNi (70/30 90/10)
- A36 Carbon Steel
- Aluminum
- 300 Series SS

Technical support

Technical assistance personnel who are factory trained to support the US Navy and USCG fleets.

Navy Service Centers located in Seattle, San Diego, and Portsmouth.

(See bulletin no. 7845)





AquaPro® Membranes and Filters

Unmatched design capabilities

Proven manufacturing and quality processes

Salts, minerals and organics are no match for Aqua Pro spiral wound membranes. They remove impurities from sea water, brackish water, fresh water and tap water.

Selecting the highest grade of materials and thoroughly testing their performance and integrity, results in unmatched membrane quality and efficiency. Flexibility in design and manufacturing capabilities allows maximum quality control and quick response to unique, custom fabrication.

Pleated filters are designed for reverse osmosis application and offer superior service life to wound or polyspun cartridges. The cartridge size to flow rate ratio is lower than most filters on the market. A wide range of in-stock sizes and micron ranges fit most standard filter housings on the market today.

(See bulletin no. 7905)



AquaPro® Pumps

Innovative engineering
Solid material choices

Quiet and durable, Aqua Pro Titan Series Pumps are dependable and specifically designed for reverse osmosis applications. Specific pump components are made of titanium which is impervious to sea water corrosion. The positive-displacement pump design uses less energy than most pumps. (See bulletin no. 7885)



Titan Series
High pressure titanium pump
708-3



Titan Series
High pressure
titanium pump
708-5



Titan Series
High pressure titanium pump
3P20



Titan Series
High pressure titanium pump
5P50HD and 5P100HD



Titan Series
High pressure titanium pump
10P200HD

Key Features

- Titanium pump heads ensure reliable operation and minimal maintenance.
- Titanium fluid ends and titanium-backed nylon valves are impervious to sea water corrosion.
- Heavy-duty industrial drive end and corrosion/wear-resistant plungers extend service life in high pressure applications.
- The combination plunger pump and pressure regulation design reduces noise and vibration to provide quiet, smooth operation.



Spares and Consumables



Parker Village Marine consumables and spare parts are stocked at Parker marine distributors worldwide. Protect your investment and warranty by using only authorized spares.

(See bulletin no. 7905)

Stowaway Watermaker Master Control Panel



(See bulletin no. 7972)

Parker Village Marine brings customers a new level of watermaker control and ease of operation. The Parker Watermaker Control Panel delivers advanced Parker technology at your fingertips.

Available now on the Stowaway series of watermakers from Parker Village Marine. (See bulletin 7861)

Pressure Vessel Assemblies



Parker Village Marine RO membrane pressure vessels feature non-metallic wetted surfaces for excellent corrosion resistance. Simple end plug design allows quick removal for element servicing. If the size you require is not shown please contact us for custom builds.

(See bulletin no. 7898)

Ultraviolet Light Germicidal System



Parker Village Marine Ultraviolet Light Germicidal Systems effectively kill bacteria and viruses with a 99.9% efficiency.

Built to last, the VMS-3 is constructed with a stainless steel housing, high purity quartz flow tube and high output, long life bulb.

The VMS-3 is typically installed in the distribution system or near the point of use to ensure safe, pure drinking water. There are no chemicals added to the water and no chemical aftertaste.

(See bulletin no. 7909)

Commercial Media Filtration Systems



Extend micron filter life and reduce maintenance cost by adding a commercial media filter. Designed for commercial operation but practical for private operation.

The media filter uses a back-washable, reusable media, which effectively removes particulate matters down to 10 microns. System comes complete with boost pump, control box, pressure gauges and valves for easy installation and operation.

(See bulletin no. 7868)

Filter Housings



◀ (See bulletin no. 7940)

100-X

30-S

Parker Village Marine offers fiberglass and stainless steel (SS316) filter housings specifically designed for seawater use.

Simple but secure closure systems allow quick cartridge change. Powder coated shells offer superior corrosion resistance. Fasteners and clamps are stainless steel.

(See bulletin no. 7914)



RMF Remineralizer Systems



Parker Village Marine Remineralizer Systems offer pH neutralization of RO water and are specifically engineered to operate with Village Marine PW and SW Series Watermakers. The media restores a buffer capacity to raise pH and reduce fresh water “aggressiveness” against metal pipes and fixtures.

(See bulletin no. 7903)

IMF Media Filtration Systems



Parker Village Marine Media Filtration Systems offer multi-media performance and are specifically engineered to operate with Village Marine PW Series Watermakers. The media layers are optimized to remove particulate matter from the feed stream ahead of the micron filtration system.

(See bulletin no. 7862)

Racor Products and Systems



Fuel 7529

Key Products

- Diesel Spin-on
- Pump Cartridge
- Pump Spin-on
- Turbine Series
- Biodiesel Systems
- Alternative Fuel
- Electric Heaters
- Service Indicators
- Bowl Upgrade Kits



Air

7539

Key Products

- ECO Spin-on Systems
- Ember Separators
- Pamic High Capacity
- Single Stage Dynacell
- Heavy-Duty Standard Air Filters Small/Medium Applications
- Pre-Cleaners
- Replacement Elements
- Service Kits

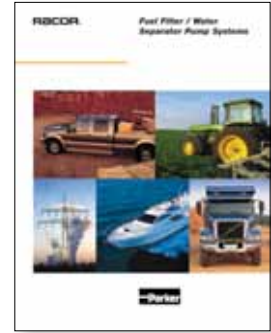


Crankcase

7790

Key Products

- Closed Crankcase
- Open Crankcase
- Hose Kits
- Marine Air Filters
- Hose Adapters
- Bulk Hose
- Conversion Kits
- CCV Heater Kits
- Filter Gauge
- Tap Sleeves



Pump

7683

Key Products

- Smart Pump System
- Integrated Filter/Separator Pump
- Fuel Conditioning Modules
- Turbine Series Electric Primer Pump Kits
- Manual Primer Pump



Fuel Dispensing 7537

Key Products

- Filter Cartridges
- Filter Vessels
- FBO Filters
- RVFS Series Vessels
- Microfilter Vessels
- Industrial Filter/Water Separator Vessels
- Fuel Monitors
- Fuel Conditioning



Fuel Additives 7518

Key Products

- Biodiesel Challenges
- Diesel Performance Plus+
- Diesel Conditioner Plus+
- Diesel Biocide
- Diesel Winter Plus+
- Gasoline Conditioner Plus+



Lubrication Filtration 7460

Key Products

- Integrated Oil/Fuel Systems
- Media Research
- Bypass Filtration
- Hydraulic Filtration
- Oil Analysis Kit
- Par Fit Oil Filters
- Engine Oils



Sentinel Protection 7330

Key Products

- Master Control
- CPV Coolant Valve
- SVK Fuel Solenoids
- STV Self Test Valve
- Orifice Selection
- Testing
- Heat Sentinel
- Troubleshooting

Parker's Motion & Control Technologies

At Parker, we're guided by a relentless drive to help our customers become more productive and achieve higher levels of profitability by engineering the best systems for their requirements. It means looking at customer applications from many angles to find new ways to create value. Whatever the motion and control technology need, Parker has the experience, breadth of product and global reach to consistently deliver. No company knows more about motion and control technology than Parker. For further info call 1 800 C-Parker (1 800 272 7537).



AEROSPACE

Key Markets

- Aircraft engines
- Business & general aviation
- Commercial transports
- Land-based weapons systems
- Military aircraft
- Missiles & launch vehicles
- Regional transports
- Unmanned aerial vehicles

Key Products

- Flight control systems & components
- Fluid conveyance systems
- Fluid metering delivery & atomization devices
- Fuel systems & components
- Hydraulic systems & components
- Inert nitrogen generating systems
- Pneumatic systems & components
- Wheels & brakes



CLIMATE CONTROL

Key Markets

- Agriculture
- Air conditioning
- Food, beverage & dairy
- Life sciences & medical
- Precision cooling
- Processing
- Transportation

Key Products

- CO₂ controls
- Electronic controllers
- Filter driers
- Hand shut-off valves
- Hose & fittings
- Pressure regulating valves
- Refrigerant distributors
- Safety relief valves
- Solenoid valves
- Thermostatic expansion valves



ELECTROMECHANICAL

Key Markets

- Aerospace
- Factory automation
- Food & beverage
- Life science & medical
- Machine tools
- Packaging machinery
- Paper machinery
- Plastics machinery & converting
- Primary metals
- Semiconductor & electronics
- Textile
- Wire & cable

Key Products

- AC/DC drives & systems
- Electric actuators
- Controllers
- Gantry robots
- Gearheads
- Human machine interfaces
- Industrial PCs
- Inverters
- Linear motors, slides and stages
- Precision stages
- Stepper motors
- Servo motors, drives & controls
- Structural extrusions



FILTRATION

Key Markets

- Food & beverage
- Industrial machinery
- Life sciences
- Marine
- Mobile equipment
- Oil & gas
- Power generation
- Process
- Transportation

Key Products

- Analytical gas generators
- Compressed air & gas filters
- Condition monitoring
- Engine air, fuel & oil filtration & systems
- Hydraulic, lubrication & coolant filters
- Process, chemical, water & microfiltration filters
- Nitrogen, hydrogen & zero air generators



FLUID & GAS HANDLING

Key Markets

- Aerospace
- Agriculture
- Bulk chemical handling
- Construction machinery
- Food & beverage
- Fuel & gas delivery
- Industrial machinery
- Mobile
- Oil & gas
- Transportation
- Welding

Key Products

- Brass fittings & valves
- Diagnostic equipment
- Fluid conveyance systems
- Industrial hose
- PTFE & PFA hose, tubing & plastic fittings
- Rubber & thermoplastic hose & couplings
- Tube fittings & adapters
- Quick disconnects



HYDRAULICS

Key Markets

- Aerospace
- Aerial lift
- Agriculture
- Construction machinery
- Forestry
- Industrial machinery
- Mining
- Oil & gas
- Power generation & energy
- Truck hydraulics

Key Products

- Diagnostic equipment
- Hydraulic cylinders & accumulators
- Hydraulic motors & pumps
- Hydraulic systems
- Hydraulic valves & controls
- Power take-offs
- Rubber & thermoplastic hose & couplings
- Tube fittings & adapters
- Quick disconnects



PNEUMATICS

Key Markets

- Aerospace
- Conveyor & material handling
- Factory automation
- Food & beverage
- Life science & medical
- Machine tools
- Packaging machinery
- Transportation & automotive

Key Products

- Air preparation
- Compact cylinders
- Field bus valve systems
- Grippers
- Guided cylinders
- Manifolds
- Miniature fluidics
- Pneumatic accessories
- Pneumatic actuators & grippers
- Pneumatic valves and controls
- Rodless cylinders
- Rotary actuators
- Tie rod cylinders
- Vacuum generators, cups & sensors



PROCESS CONTROL

Key Markets

- Chemical & refining
- Food, beverage & dairy
- Medical & dental
- Microelectronics
- Oil & gas
- Power generation

Key Products

- Analytical sample conditioning products & systems
- Fluoropolymer chemical delivery fittings, valves & pumps
- High purity gas delivery fittings, valves & regulators
- Instrumentation fittings, valves & regulators
- Medium pressure fittings & valves
- Process control manifolds



SEALING & SHIELDING

Key Markets

- Aerospace
- Chemical processing
- Consumer
- Energy, oil & gas
- Fluid power
- General industrial
- Information technology
- Life sciences
- Military
- Semiconductor
- Telecommunications
- Transportation

Key Products

- Dynamic seals
- Elastomeric o-rings
- EMI shielding
- Extruded & precision-cut, fabricated elastomeric seals
- Homogeneous & inserted elastomeric shapes
- High temperature metal seals
- Metal & plastic retained composite seals
- Thermal management

VMT Sales Contacts

Argentina

Buenos Aires
+54 3327 44 4129
rwall@parker.com

Australia

Castle Hill
+61 2 9634 5104
RexBarry@parker.com

Austria

Wiener Neustadt
+43 (0) 644 820 8799
parker.austria@
parker.com

Azerbaijan

Baku
+ 994 50 2233 458
parker.azerbaijan@
parker.com

Bahamas

Miami, FL
305-588-6679
operez_jr@parker.com

Bahrain

Jebel Ali - Dubai - UAE
+971 4 8127100
+971 4 8127114
+971 50 6370478
khalid.samhan@
parker.com

Belgium

Nivelles
+32 0 67 280 900
parker.belgium@
parker.com

Brazil

P: +55 12 4009-3500
M: +55 12 8125-8876
vinicius.patricio@
parker.com

Canada

Missauga Ontario
209 247 6038
ed.wiebe@parker.com

Caribbean Region

Miami, FL
operez_jr@parker.com

Chile

anny.haberland@
parker.com

China

Shanghai
86 21 2899 5000
JamesWang@
parker.com

Colombia

Bogota, Colombia email
fanzola@parker.com
Tel: 57 310 618 0951

Czech Republic

Klecany
420 284 083 111
parker.czechrepublic
@parker.com

Denmark

Ballerup
+45 21 6158 35
parker.denmark@
parker.com

Eastern Europe

Wiener Neustadt
+43 0 2622 23501 900
parker.easteurope@
parker.com

Finland

Vantaa
358 (0)20 753 2500
parker.fi nland@
parker.com

Germany

Kaarst
+49 (0)2131 4016 0
parker.germany@
parker.com

Greece

Athens
+30 210 933 6450
parker.greece@
parker.com

Hong Kong

Hong Kong
852 2428 8008
albertcheung@
parker.com

India

Mumbai
+91 22 6513 7081-85
santosh.shetty@
parker.com

Italy

Corsico
+39 02 45 19 21
parker.italy@
parker.com

Japan

Tokyo
+81 3 6408 3901
kishio.hosaka@
parker.com

Kazakhstan

Almaty
+7 7272 505 800
parker.easteurope@
parker.com

Malaysia

Kuala Lumpur
+603 7849 0845
ryan.chew@parker.com

Mexico

Monterrey
+52 1 811 066 0804
vcardenas@
parker.com

New Zealand

Auckland
+64 9 574 1744
armin.howard@
parker.com

Norway

Oslo
+47 64 91 10 00
parker.norway@
parker.com

Panama

francisco.lopez@
parker.com

Phillipines

Manilla
+63 917 84 85945
flabayan@parker.com

Poland

Warsaw
+48 502 378 178
parker.poland@
parker.com

Portugal

Leca da Palmeira
+351 22 999 7360
parker.portugal@
parker.com

Russia

Moscow
+7 495 645-2156
parker.russia@
parker.com

Singapore

Singapore
+65 6887 6300
Sheila.lim@
parker.com

South Africa

Kempton Park
+27 (0)11 961 0700
parker.southafrica@
parker.com

South Korea

Seoul
+82 31 359 0890
jae.cheon.kim@
parker.com

Spain

Madrid
+34 629 903 410
parker.spain@
parker.com

Sweden

Spanga
+46 (0)8 59 79 50 00
parker.sweden@
parker.com

Switzerland

Etoy
+41 (0) 21 821 02 30
parker.switzerland@
parker.com

Taiwan

Taipei
886 2 2298 8987
clark.lee@parker.com

Thailand

Bangkok
rserna@parker.com

The Netherlands

Oldenzaal
+31 (0)541 585 000
parker.nl@parker.com

Turkey

Istanbul
+90 216 4997081
parker.turkey@
parker.com

United Arab Emirates

Dubai
97148127100
parker.me@
parker.com

United Kingdom

Dewsbury
apay@parker.com

United States

VMT
Technical Services
Gardena, CA
1 310 516 9911
vmt@parker.com

Venezuela

Caracas
+58 212 238 5422
glezama@parker.com

Vietnam

Cell (84) 906 33 00 88
norman.lim@parker.com

Worldwide Filtration Manufacturing Locations

North America

**Compressed Air Treatment
Filtration & Separation/Balston**
Haverhill, MA
978 858 0505
www.parker.com/balston

Finite Airtek Filtration
Lancaster, NY
716 686 6400
www.parker.com/pdf

Finite Airtek Filtration
Oxford, MI
248 628 6400
www.parker.com/finitefilter

**Engine Filtration &
Water Purification
Racor**
Modesto, CA
209 521 7860
www.parker.com/racor

Racor
Holly Springs, MS
662 252 2656
www.parker.com/racor

Racor
Beaufort, SC
843 846 3200
www.parker.com/racor

Parker- Village Marine
Carson, CA
310 516 9911
www.parker.com/watermakers

**Hydraulic Filtration
Hydraulic Filter**
Metamora, OH
419 644 4311
www.parker.com/hydraulicfilter

**Process Filtration
domnick hunter Process Filtration**
Oxnard, CA
805 604 3400
www.parker.com/processfiltration

Europe

**Compressed Air Treatment
domnick hunter Filtration & Separation**
Gateshead, England
+44 (0) 191 402 9000
www.parker.com/dhfns

Parker Gas Separations
Etten-Leur, Netherlands
+31 76 508 5300
www.parker.com/dhfns

Hiross Zander
Padova Business Unit
Padova, Italy
+39 049 9712 111
www.parker.com/hzd

Hiross Zander
Essen Business Unit
Essen, Germany
+49 2054 9340
www.parker.com/hzd

**Engine Filtration &
Water Purification
Racor**
Dewsbury, England
+44 (0) 1924 487 000
www.parker.com/rfde

Racor Research & Development
Stuttgart, Germany
+49 (0)711 7071 290-10
www.parker.com/rfde

**Hydraulic Filtration
Hydraulic Filter**
Arnhem, Holland
+31 26 3760376
www.parker.com/hfde

Urjala Operation
Urjala, Finland
+358 20 753 2500
www.parker.com/hfde

Condition Monitoring Center
Norfolk, England
+44 1842 763 299
www.parker.com/hfde

**Process Filtration
domnick hunter Process Filtration**
Birtley, England
+44 (0) 191 410 5121
www.parker.com/processfiltration

Asia Pacific

Australia
Castle Hill, Australia
+61 2 9634 7777
www.parker.com/australia

China
Shanghai, China
+86 21 5031 2525
www.parker.com/china

India
Navi Mumbai, India
+91 22 651 370 8185
www.parker.com/india

Japan
Tokyo, Japan
+81 45 870 1522
www.parker.com/japan

Korea
Hwaseon-City
+82 31 359 0852
www.parker.com/korea

Singapore
Jurong Town, Singapore
+65 6887 6300
www.parker.com/singapore

Thailand
Bangkok, Thailand
+66 2 186 7000
www.parker.com/thailand

**Latin America
Parker Comercio Ltda.
Filtration Division**
Sao Paulo, Brazil
+55 12 4009 3500
www.parker.com/br

Pan American Division
Miami, FL
305 470 8800
www.parker.com/panam

Africa
Aeroporto Kempton Park, South Africa
+27 11 9610700
www.parker.com/africa

